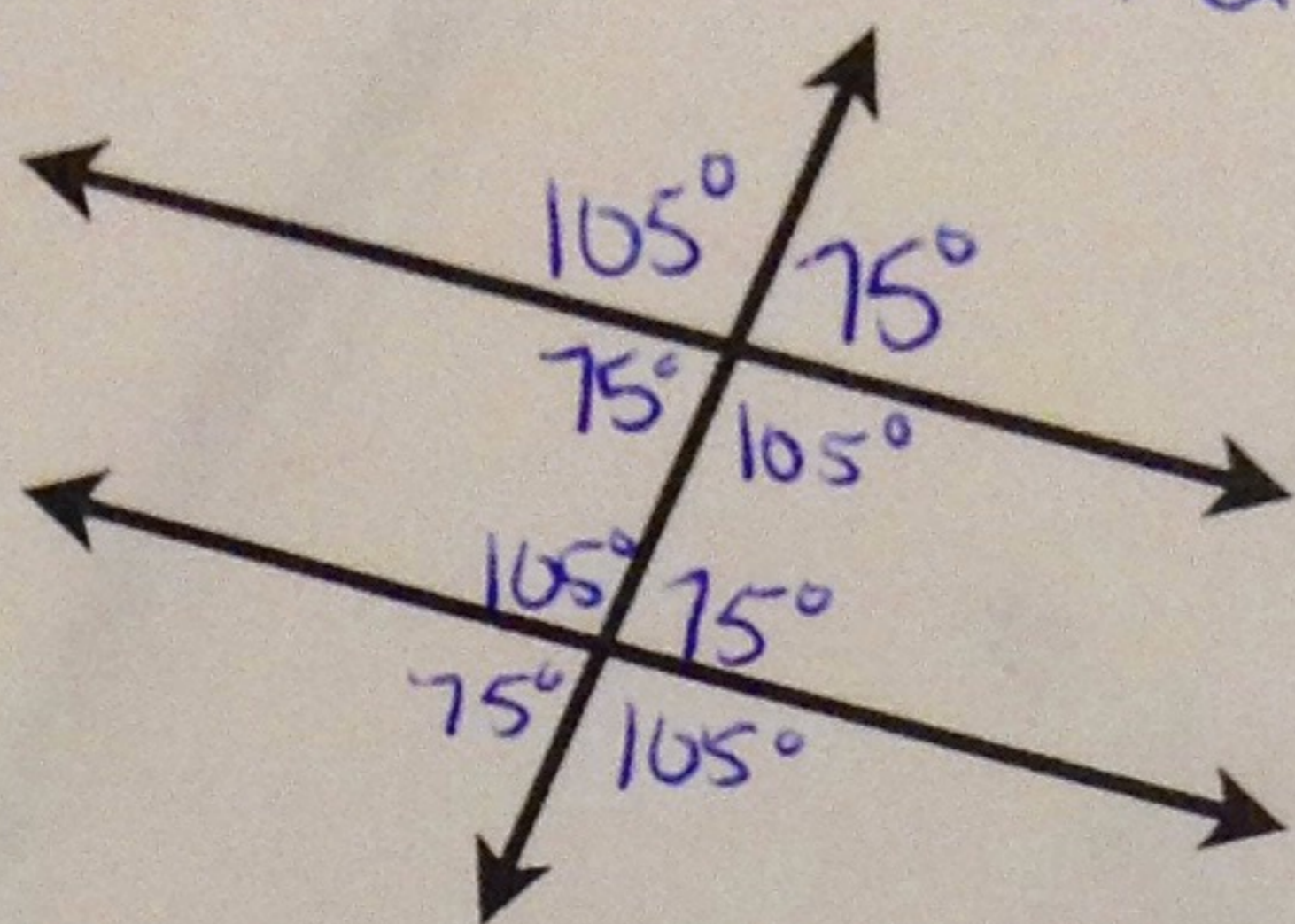


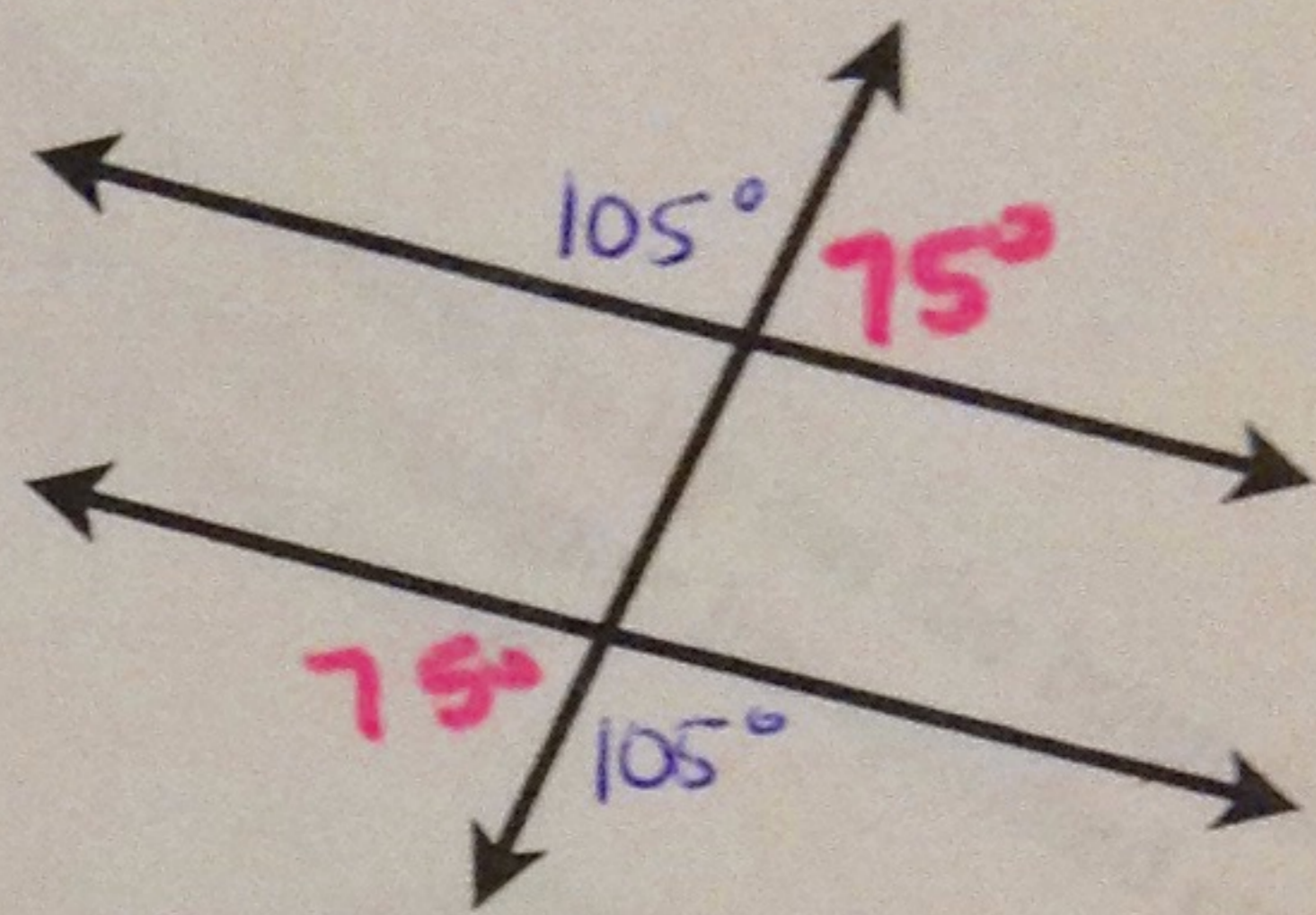
Angle Terms

parallel lines

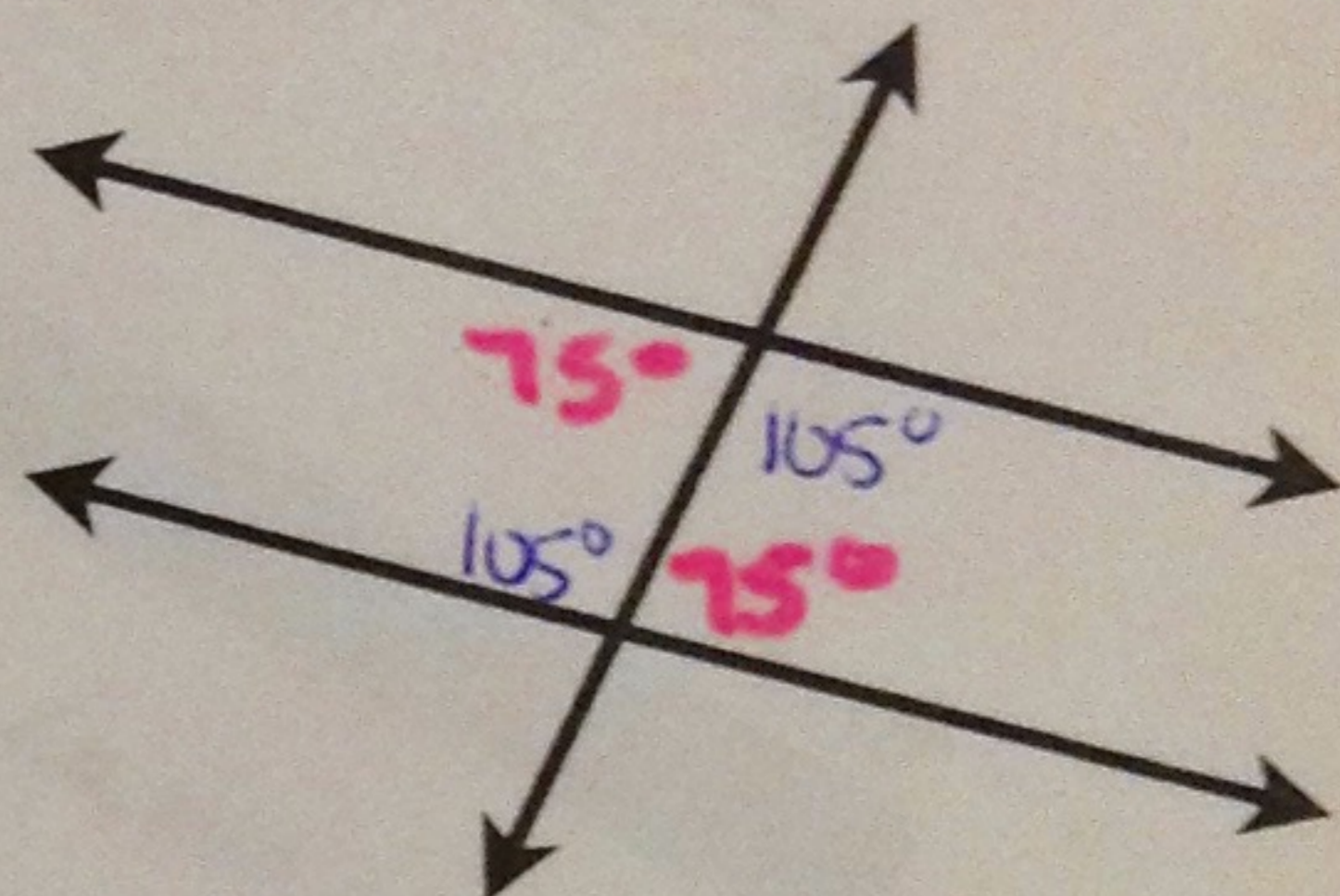
transversal



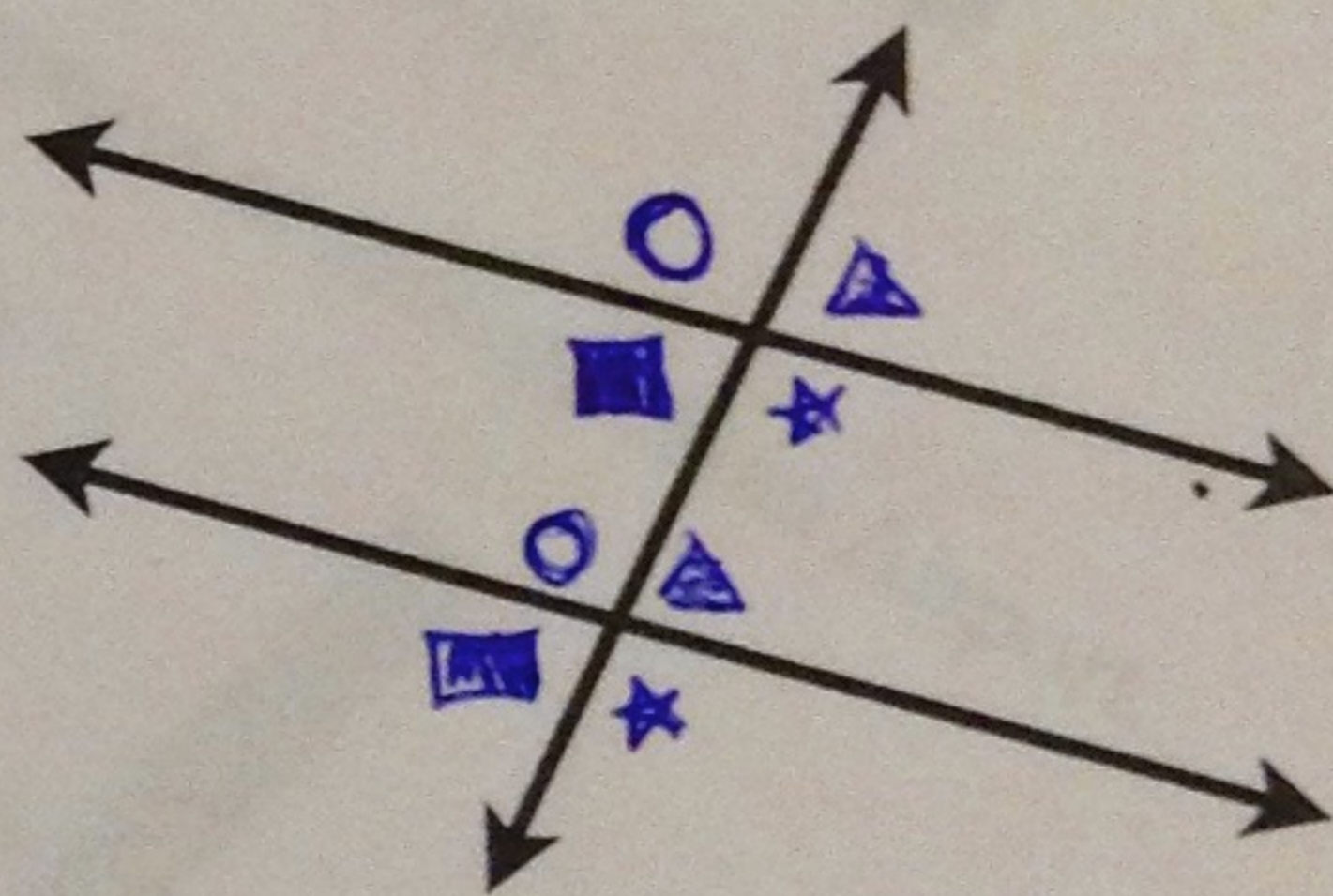
(outside)
Alternate exterior angles - angles on opposite sides of the transversal and outside the parallel lines are equal.



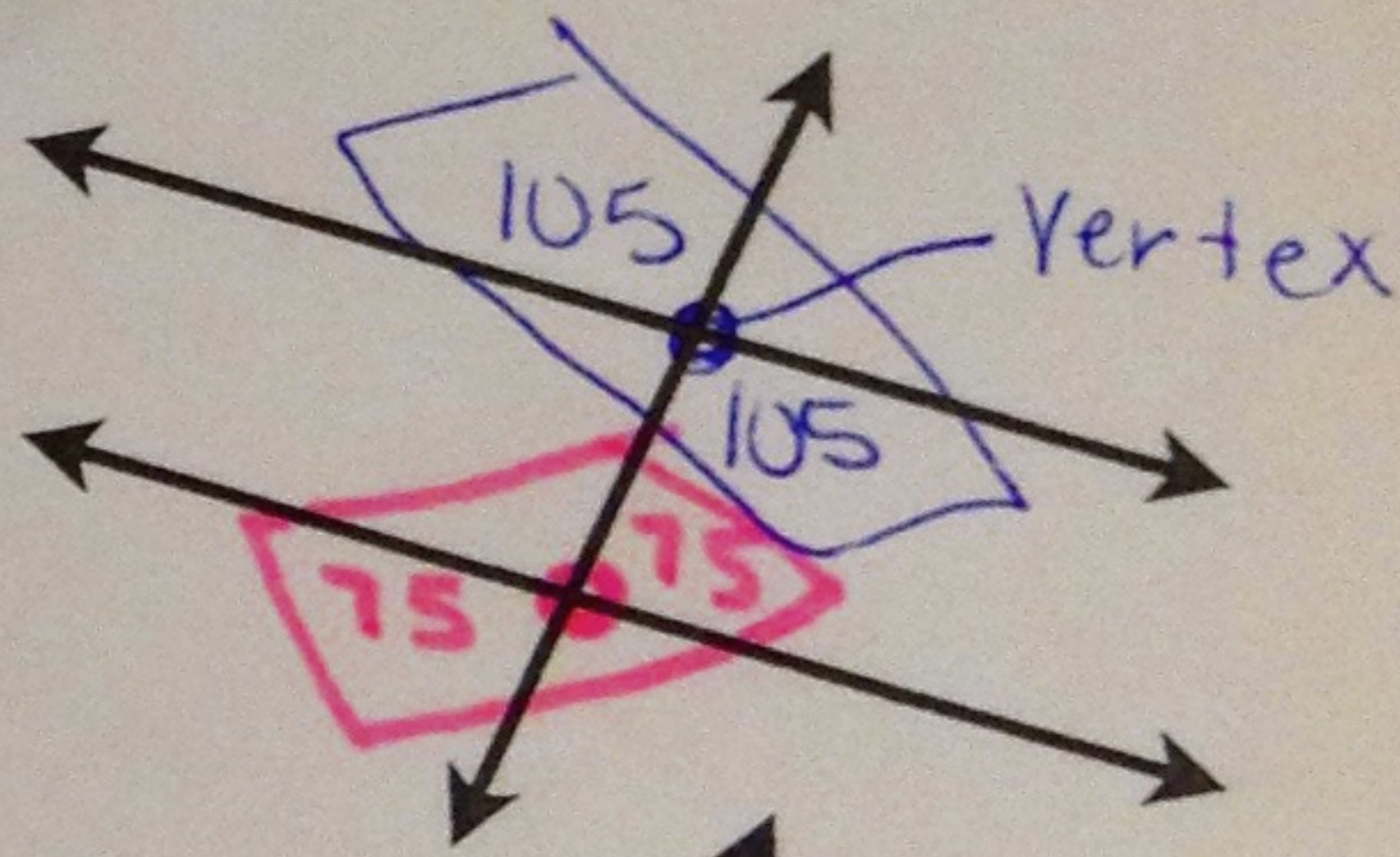
(inside)
Alternate interior angles - angles on opposite sides of the transversal and inside (in between) the parallel lines are equal.



Matching angles
Corresponding angles - angles on the same side of the transversal and nonadjacent are equal.
 * not next to each other



Vertical angles - angles that are on opposite sides of the transversal, nonadjacent, and share a vertex are equal.



Supplementary angles - angles that add to equal 180 degrees.

* Usually these angles are side by side.

